

PORTICELLO PORT MASTER PLAN, SANTA FLAVIA, PALERMO, ITALY

CLIENT: MUNICIPALITY OF SANTA FLAVIA

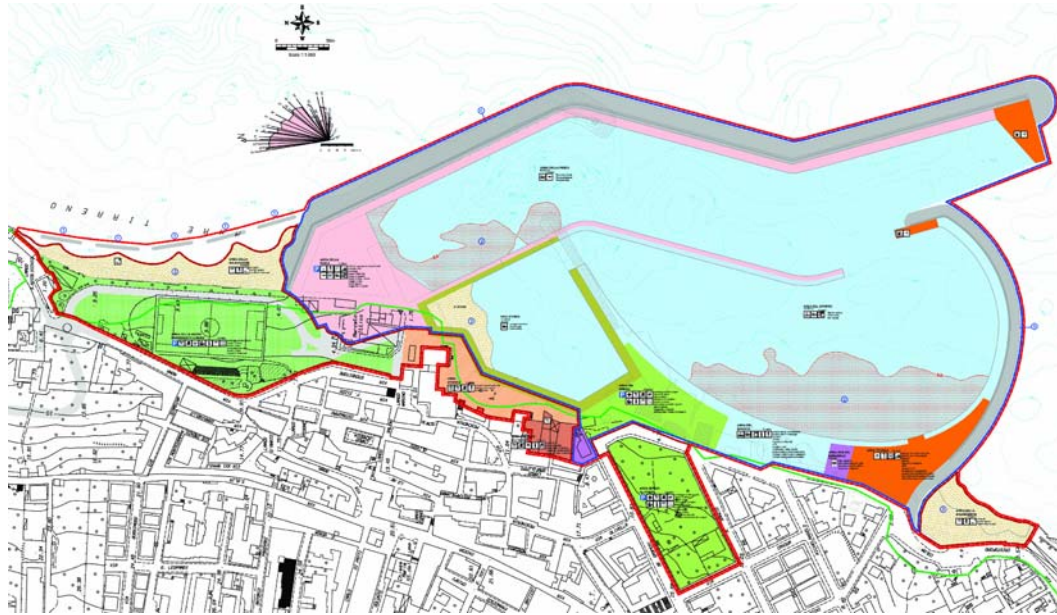
LOCATION: Porticello District, Santa Flavia, Palermo, Italy

YEAR: 2004

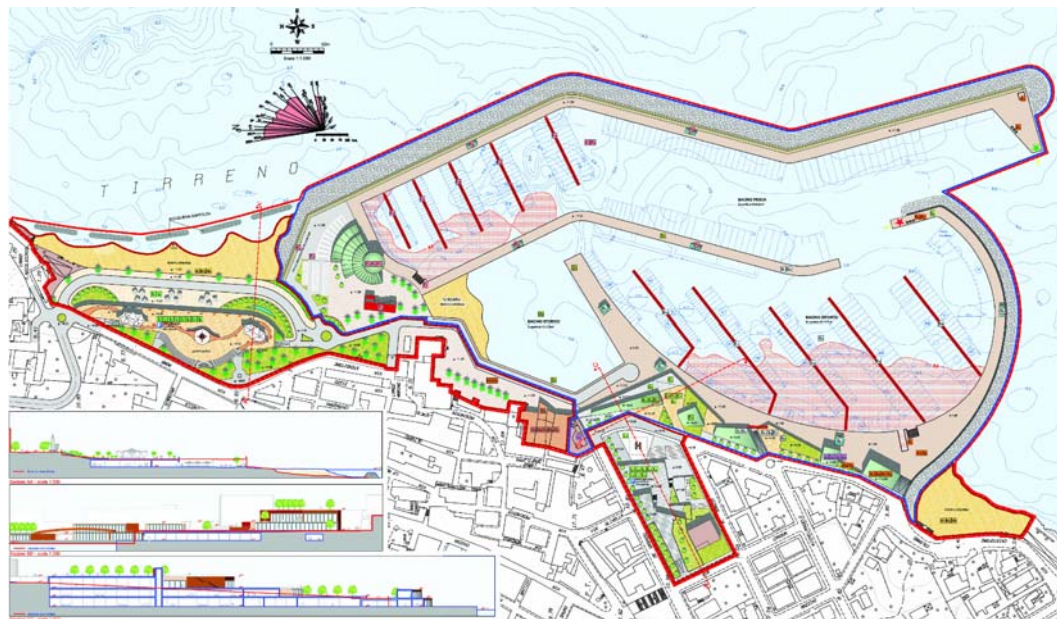
BUDGET: € 100,000,000

PROVIDED SERVICES:

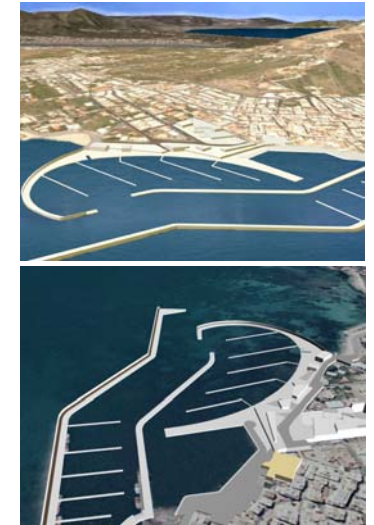
- Preliminary and final level design



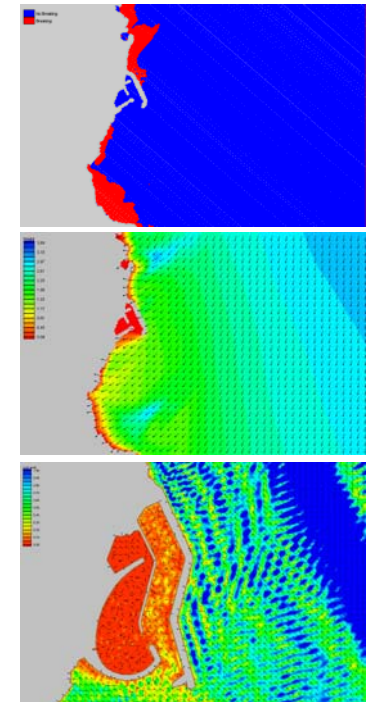
MASTER PLAN



PRELIMINARY DESIGN



3D MODEL



COASTAL ENGINEERING STUDIES



CURRENT LAYOUT