

PORTO D'ELBA, PORTOFERRAIO, ELBA ISLAND, ITALY

CLIENT: PORTO D'ELBA s.r.l.

LOCATION: Portoferraio, Elba Island, Livorno, Italy

YEAR: 2007 - 2008

BUDGET: € 75,600,000

PROVIDED SERVICES:

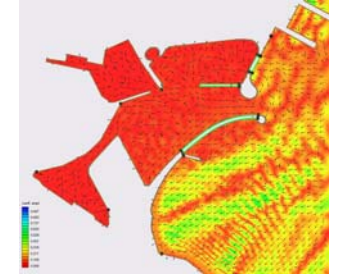
- preliminary, final, construction level design
- environmental impact assessment study
- supervision of construction works
- health and safety duties



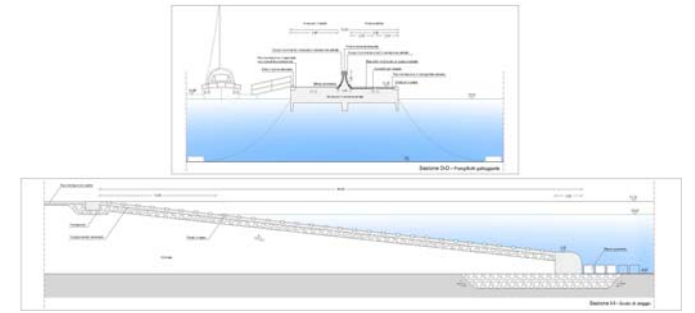
PROJECT LAYOUT



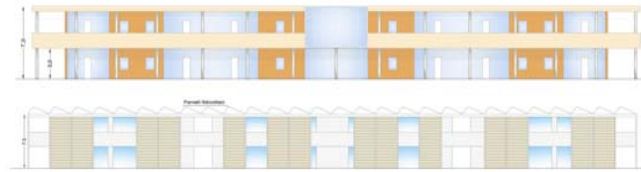
CURRENT LAYOUT



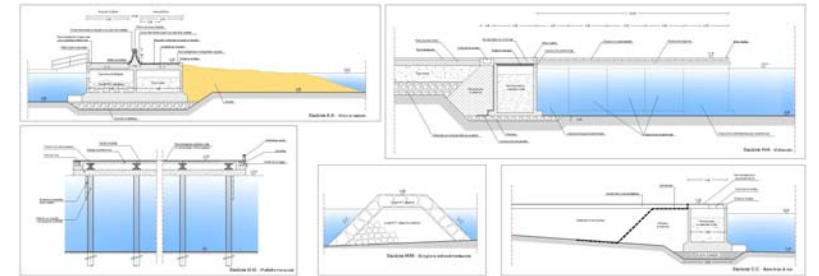
COASTAL ENGINEERING STUDIES



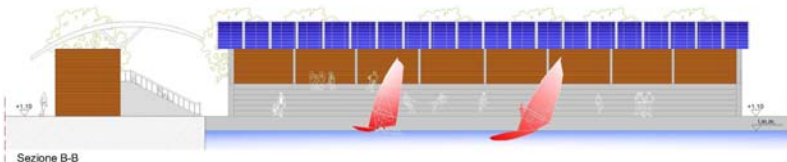
RENDERING OF MULTIFUNCTIONAL DOCK



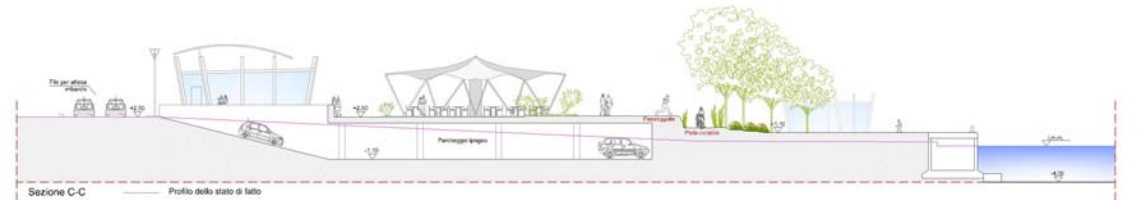
SERVICE APARTMENTS



TYPICAL CROSS SECTIONS



Sezione B-B
MULTIFUNCTIONAL AREA



Sezione C-C
Profilo dello stato di fatto
NEW MARINA AND SHOPPING VILLAGE SECTION