

BATHYMETRIC SURVEY OF THE SEABED IN FRONT OF AND ADJACENT TO THE PIER OF SMEB CANTIERI NAVALI IN THE PORT OF MESSINA, ITALY

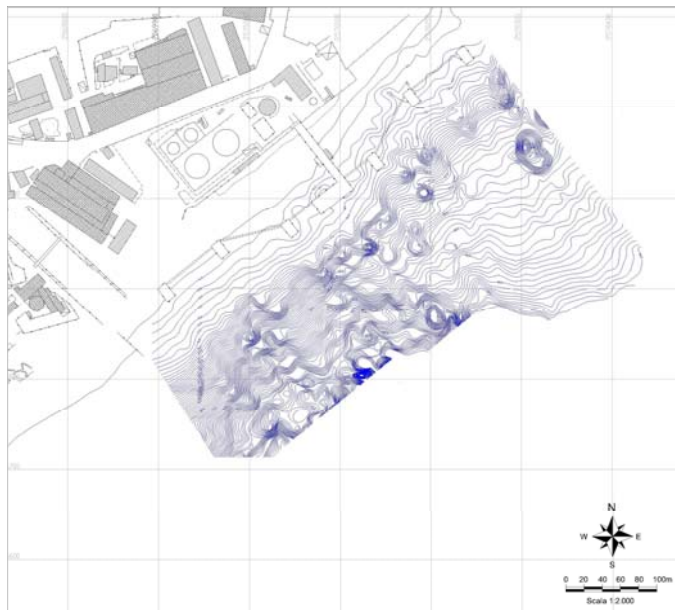
CLIENT: TESECO S.p.A.

PLACE: Messina, Italy

YEAR: 2005

DESCRIPTION OF SERVICES:

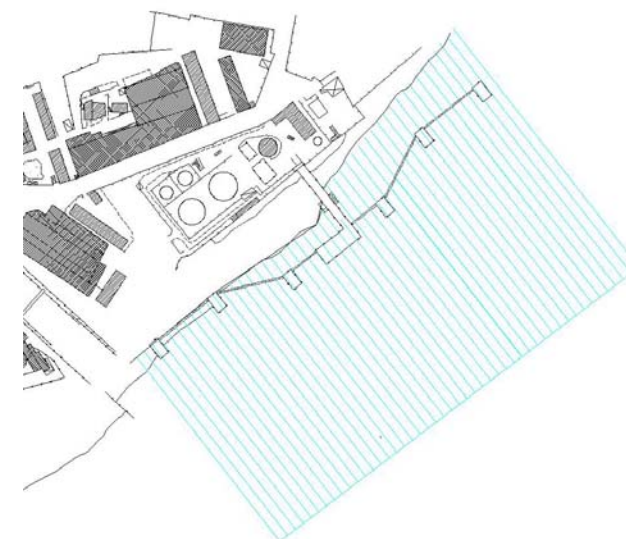
- bathymetric and stratigraphic survey



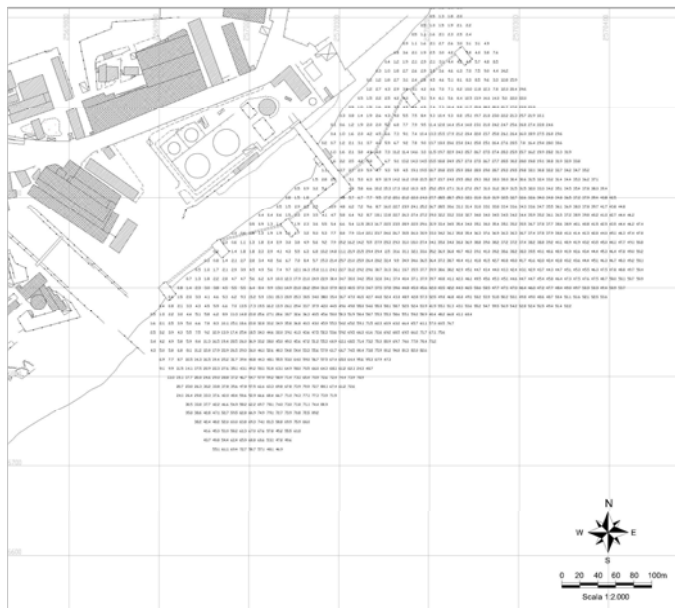
ISOBATH LINES



POSITIONING OF GPS RECEIVER ON DATUM POINT



SURVEY AREA



BATHYMETRIC DEPTHS



POSITIONING OF THE INSTRUMENTS ON THE BOAT



DEPTH SOUNDER