

STUDIES FOR THE MASTER PLAN OF THE MARINA DI PALMA PORT, PALMA DI MONTECHIARO, AGRIGENTO, ITALY

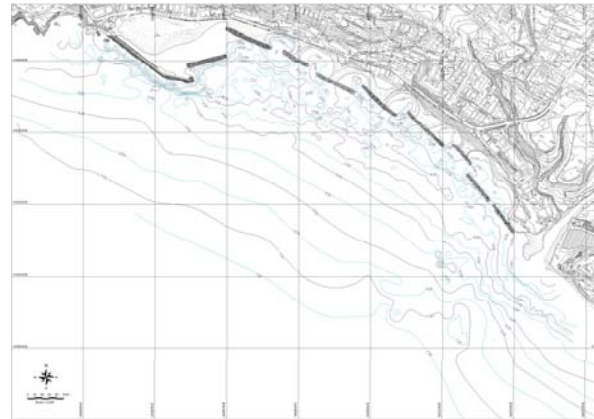
CLIENT: MINISTERO DELLE INFRASTRUTTURE E DEI TRASPORTI
S.I.I.T. SICILIA - CALABRIA
GENIO CIVILE OPERE MARITTIME PER LA SICILIA

PLACE: Marina di Plama, Palama di Montechiaro, Agrigento, Italy

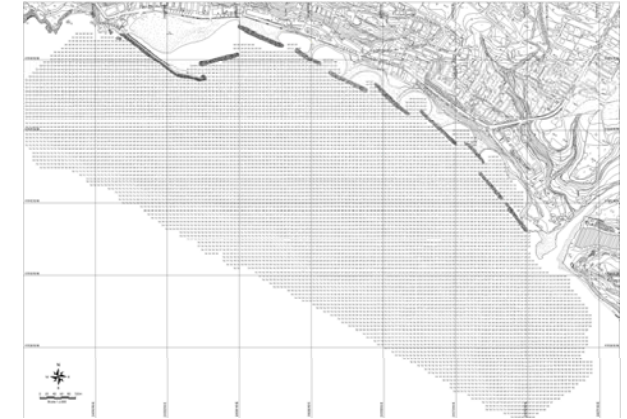
YEAR: 2005

DESCRIPTION OF SERVICES:

- bathymetric and topographic survey
- hydrological study
- sedimentological study



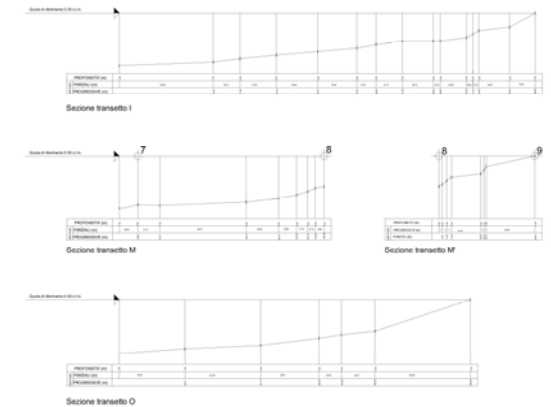
BATHYMETRIC AND TOPOGRAPHIC SURVEY: ISOBATH LINES



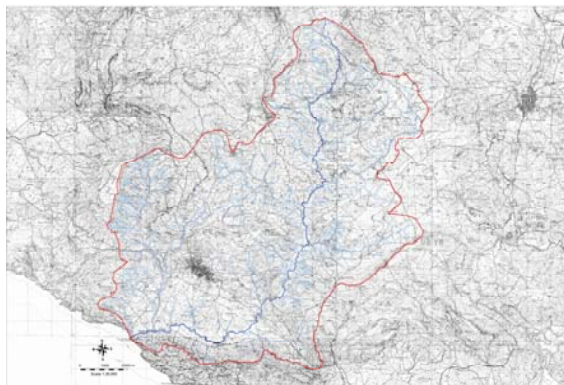
BATHYMETRIC AND TOPOGRAPHIC SURVEY: BATHYMETRIC DEPTHS



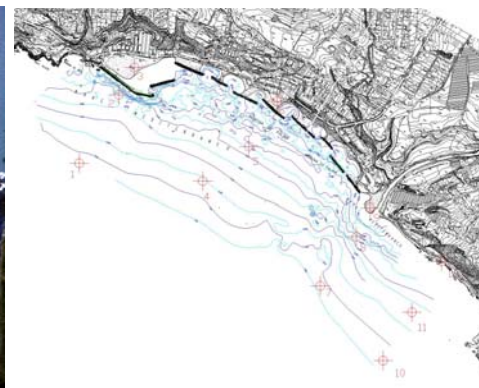
SITE IMAGES



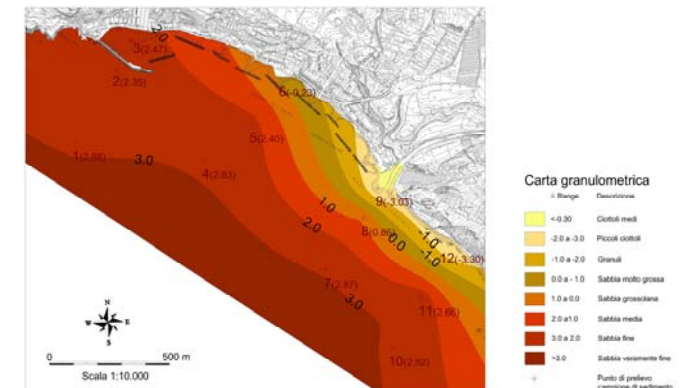
BATHYMETRIC AND TOPOGRAPHIC SURVEY: BATHYMETRIC SECTIONS



HYDROLOGICAL ANALYSIS: PALMA RIVER BASIN



SENDMENTOLOGICAL ANALYSIS: TAKING AND POSITION OF THE SAMPLES



SENDMENTOLOGICAL ANALYSIS: SEDIMENTS SIZE MAP