

PORT OF TREMESTIERI, MESSINA, ITALY

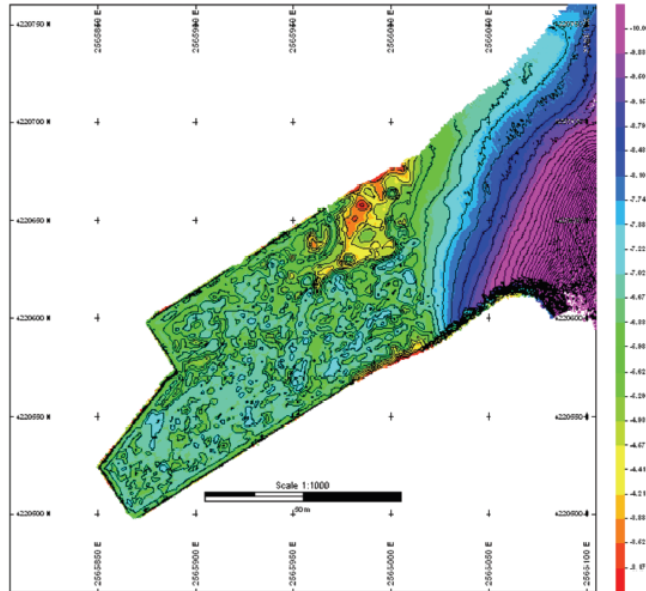
CLIENT: Società Consortile Approdi S.C.A.R.L.

LOCATION: Tremestieri, Messina, Italy

YEAR: 2006

PROVIDED SERVICES:

- Morpho-bathymetric survey.



MORPHO-BATHYMETRIC SURVEY: 2D BATHYMETIC PLAN



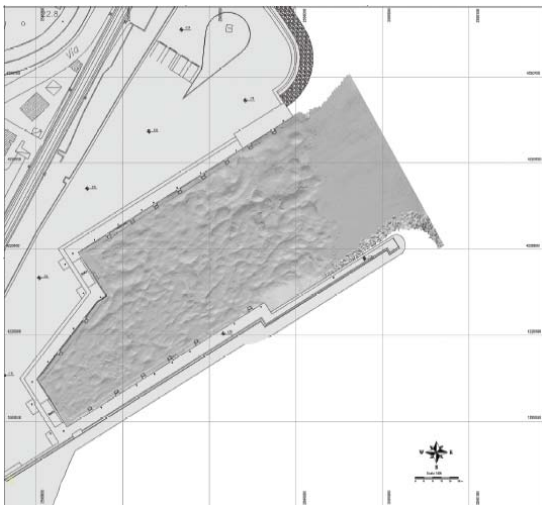
DATA ACQUISITION



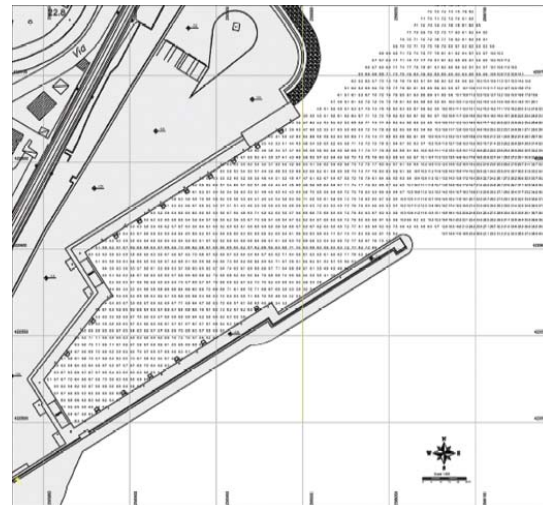
ISOBATH LINES



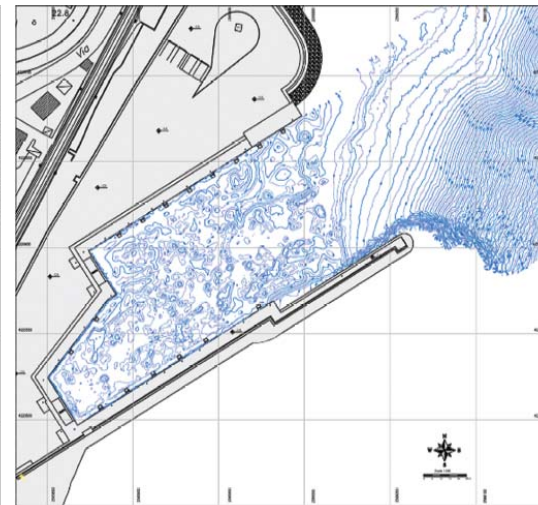
POSITIONING OF GPS RECEIVER ON DATUM POINT



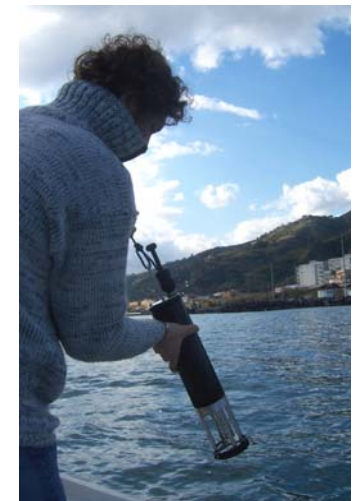
MORPHO-BATHYMETRIC SURVEY: DIGITAL ELEVATION MODEL OF BEDSEA



MORPHO-BATHYMETRIC SURVEY: BATHYMETRIC DEPTH



MORPHO-BATHYMETRIC SURVEY: ISOBATH LINES



SOUND SPEED TRANSDUCTOR