

MASTER PLAN OF PALERMO HARBOURS SYSTEM

CLIENT: PORT AUTHORITY OF PALERMO

LOCATION: Palermo, Italy

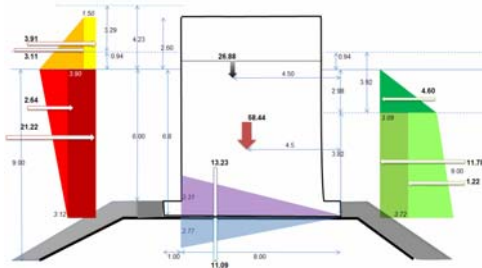
YEAR: 2009

PROVIDED SERVICES:

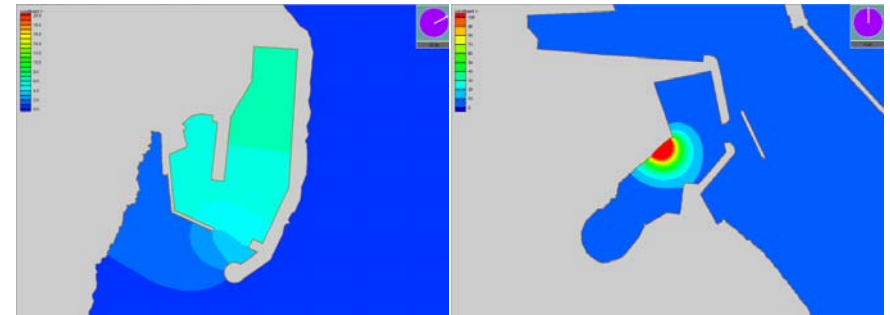
- Identification of the existing docks
- Meteorological and morphological study
- Navigability study
- Flushing and Spill modelling studies
- Hydrological, hydraulic and geotechnical studies
- Study of the basins internal agitation and the mouths and verifications of the new and existing defensive works
- Diffraction studies, analysis of existing and proposed protection structures
- Integrated port safety relationship
- Environmental Impact Assessment study



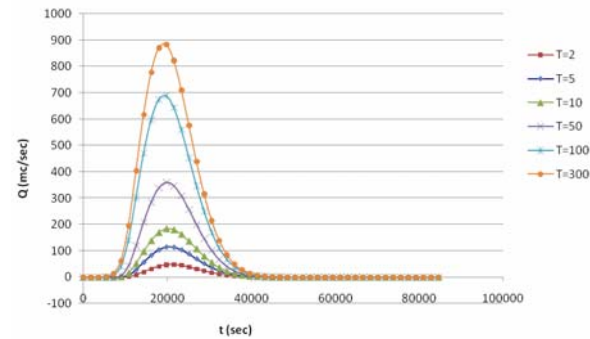
MASTERPLAN OF PALERMO HARBOURS SYSTEM



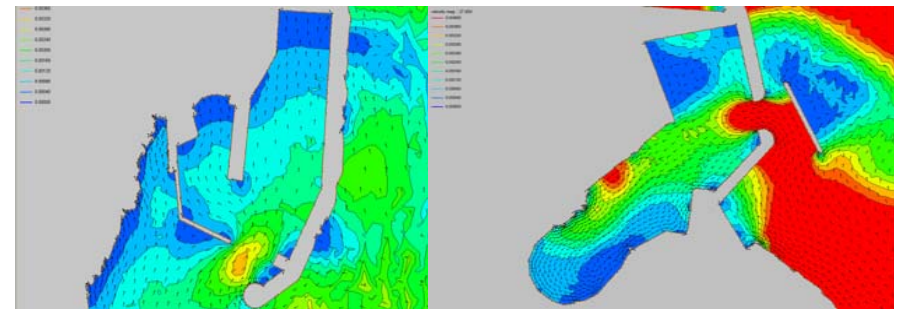
VERIFICATION OF STABILITY OF SEA WORKS



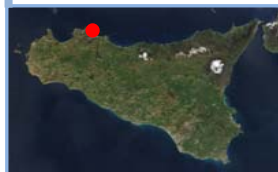
ANALYSIS OF DIFFUSION OF POLLUTANTS

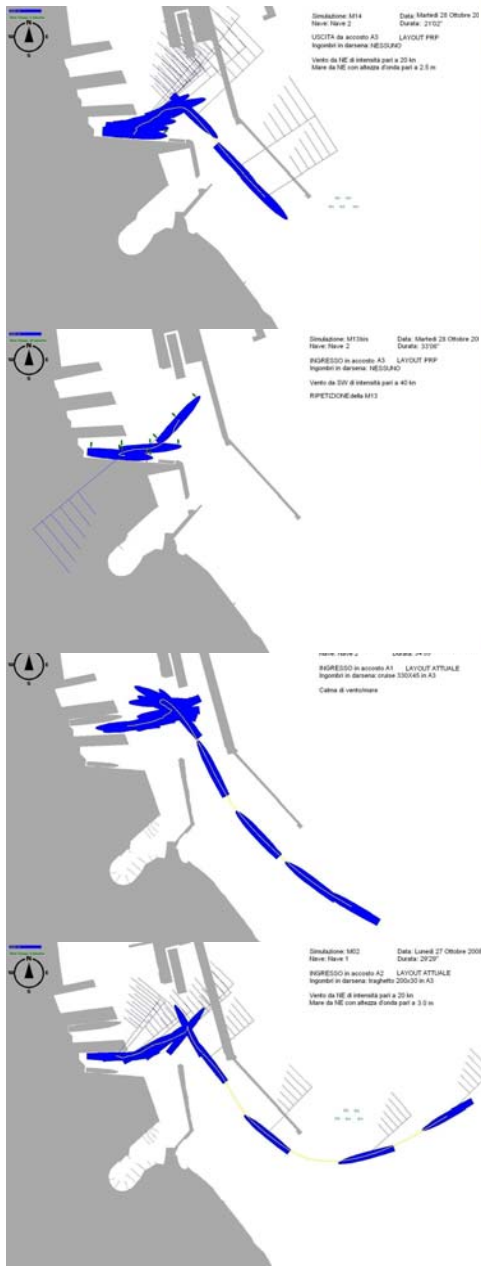


HYDROLOGIC ANALYSIS

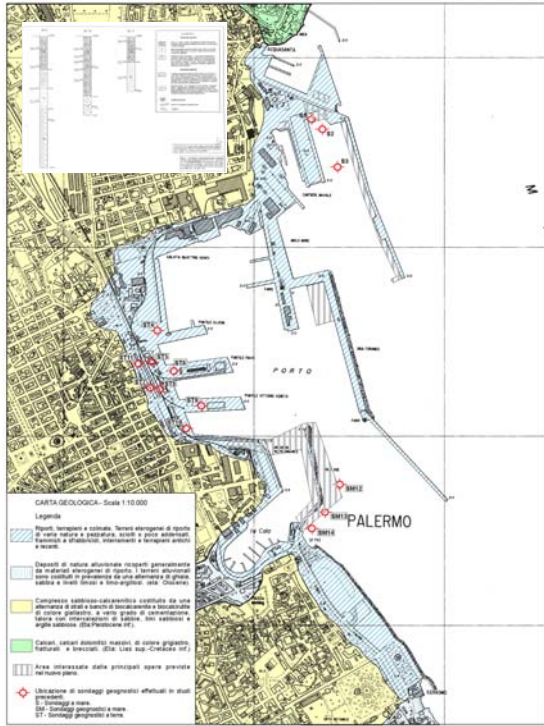


FLUSHING STUDY

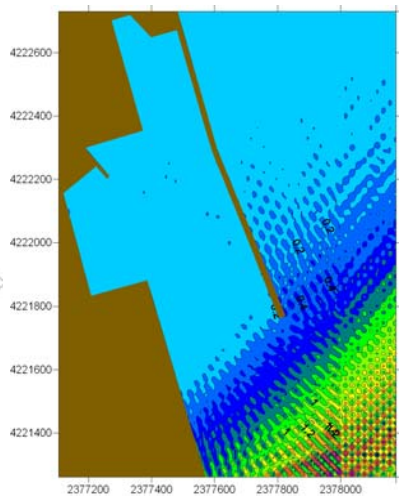




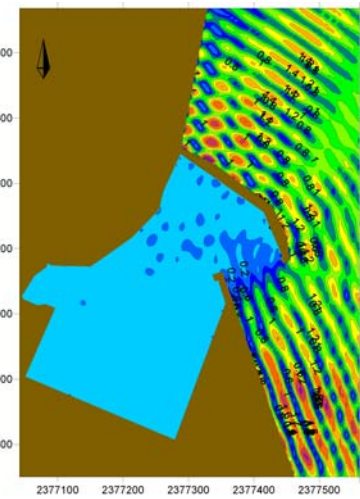
NAVIGABILITY STUDIES : MANOUVRE SIMULATION



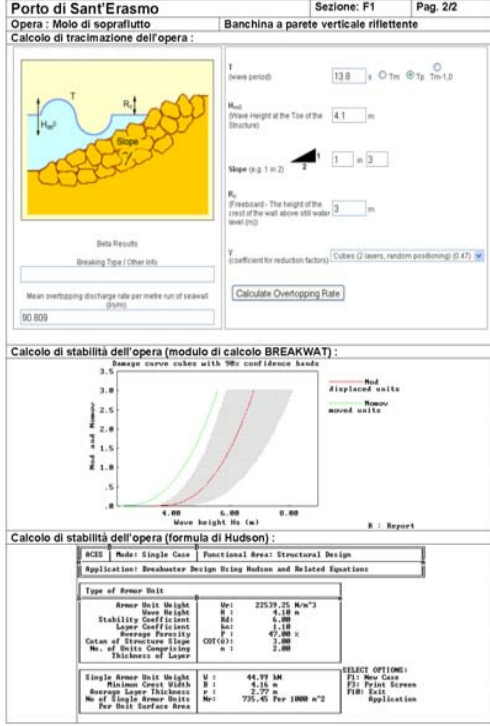
HYDROGEOLOGIC, GEOLOGIC AND GEOTECHNICAL STUDIES



DIFFRACTION STUDIES



TYPICAL CHARACTERIZATION OF DOCKS



E.I.A. STUDIES



ANALYSIS OVERTOPPING PHENOMENA

