

# BATHYMETRIC SURVEY OF BASIN BETWEEN THE TRAPEZOIDAL QUAY AND THE SOUTH BREAKWATER OF PORT OF PALERMO, ITALY

CLIENT: PORT AUTHORITY OF PALERMO

LOCATION: Palermo, Italy

YEAR: 2004

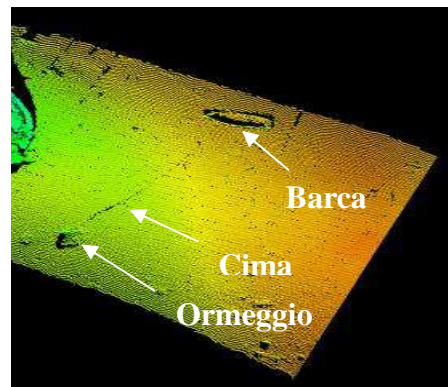
BUGDET: € 20.000

PROVIDED SERVICES:

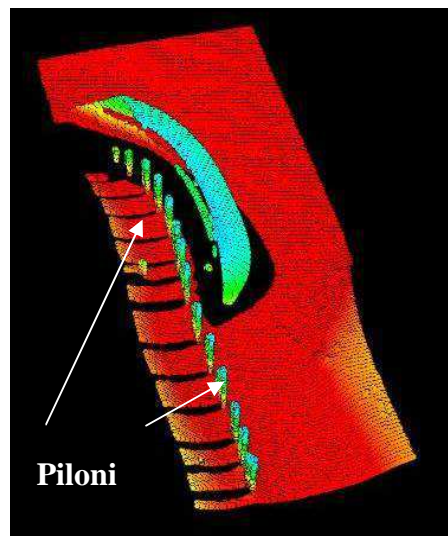
- morpho-batymetric survey



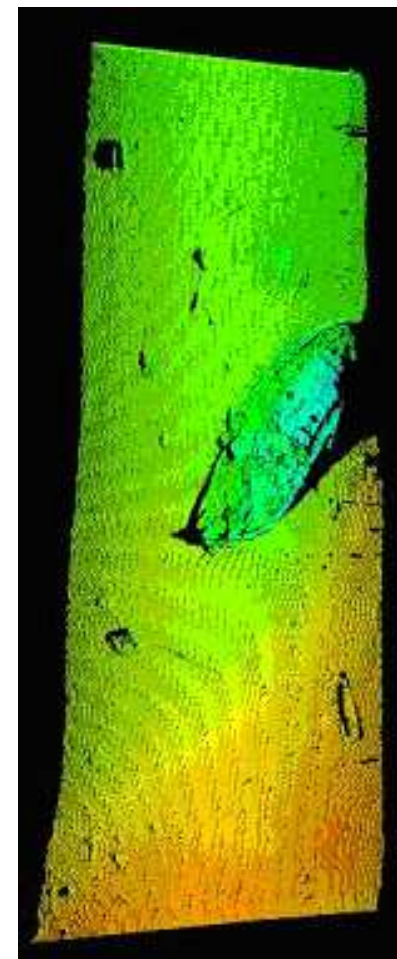
BOTTOM MORPHOLOGY



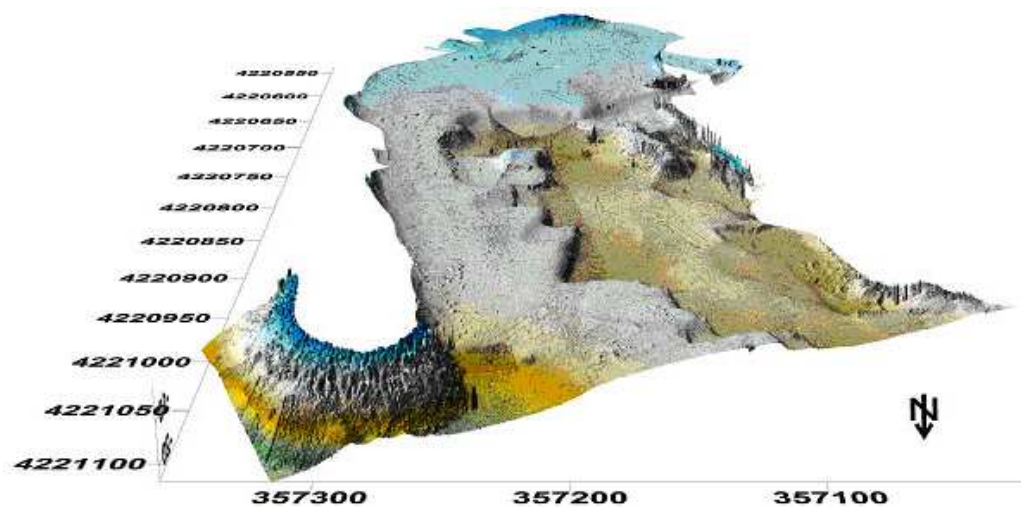
IDENTIFICATION OF TARGETS ON THE BOTTOM



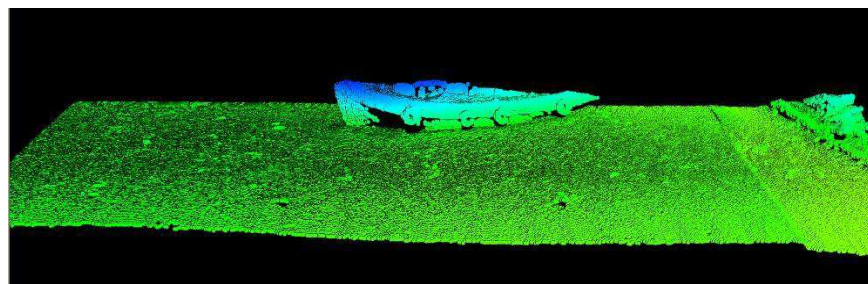
IDENTIFICATION OF PIER'S SUPPORT PILES



IDENTIFICATION OF A SHIPWRECK ON THE BOTTOM



BOTTOM DIGITAL ELEVATION MODEL



IDENTIFICATION OF A SHIPWRECK ON THE BOTTOM