

# BATHYMETRIC AND TOPOGRAPHIC SURVEY IN THE "ZETA 10" NAUTICAL POLE AT POZZILLO, CINISI, PALERMO, ITALY

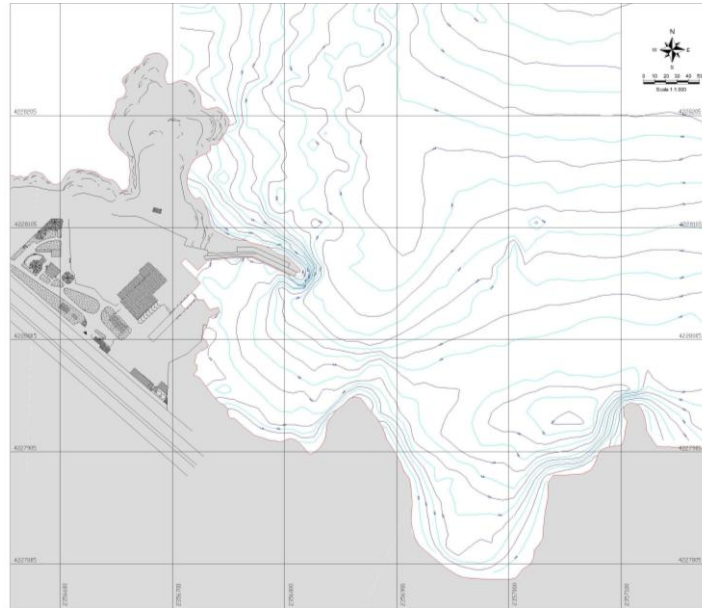
CLIENT: THALASSOKRATA s.r.l.

PLACE: Pozzillo, Cinisi, Palermo, Italy

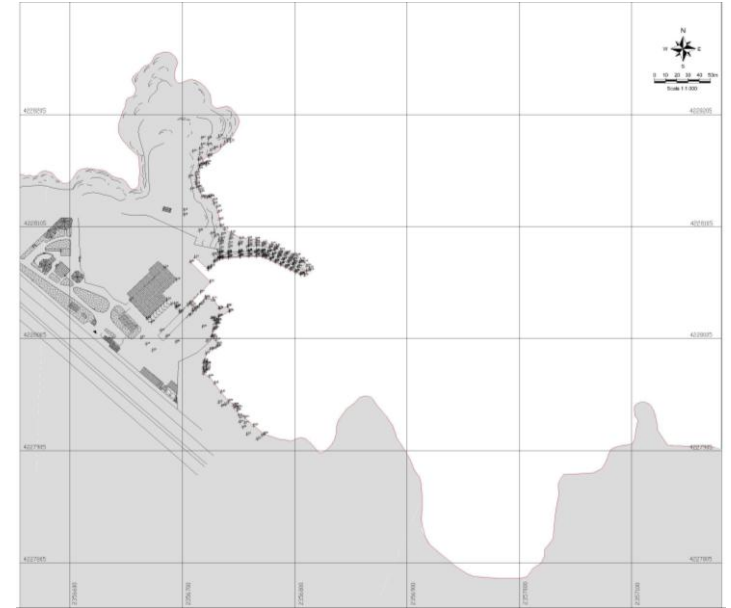
YEAR: 2005

DESCRIPTION OF SERVICES:

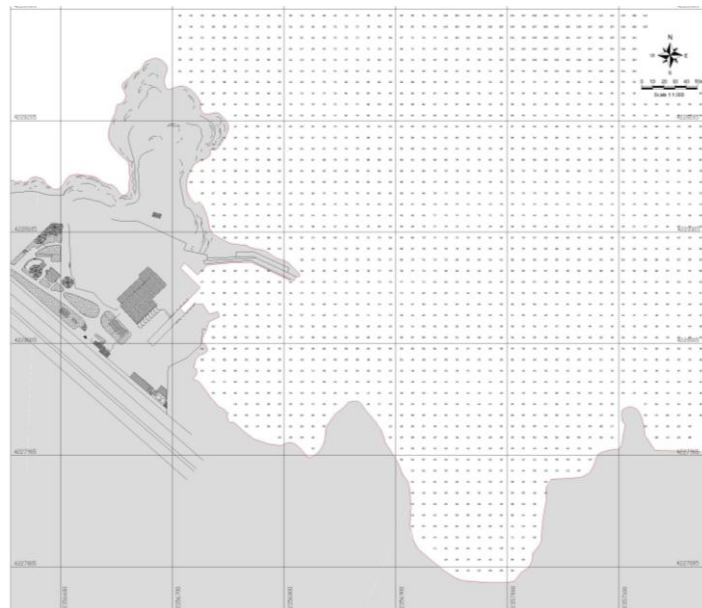
- bathymetric and topographic survey



ISOBATH LINES



TOPOGRAPHIC HEIGHTS



BATHYMETRIC DEPTHS



POSITIONING OF GPS RECEIVER ON DATUM POINT



SB DATA ACQUISITION



POSITIONING OF THE INSTRUMENTS ON THE BOAT



DEPTH SOUNDER