

# PORT OF PANTELLERIA ISLAND, TRAPANI, ITALY

CLIENT: BEFUMO S.

PLACE: Pantelleria Island, Trapani, Italy

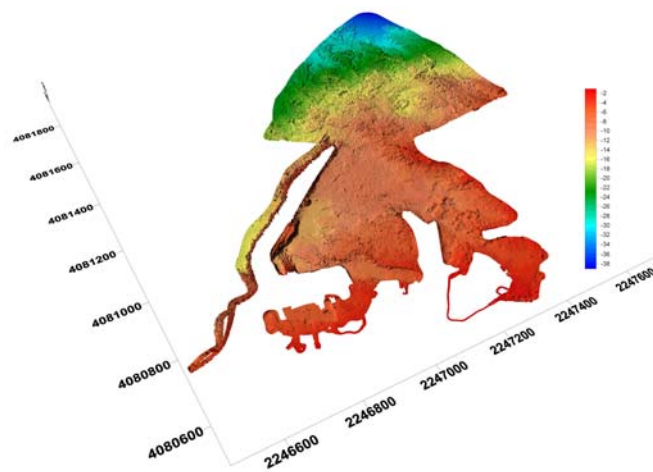
YEAR: 2006

PROVIDED SERVICES:

- Morpho-bathymetric and topographical survey



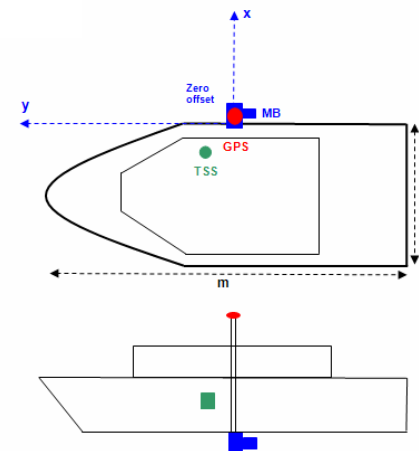
ISOBATH LINES



BOTTOM DIGITAL ELEVATION MODEL



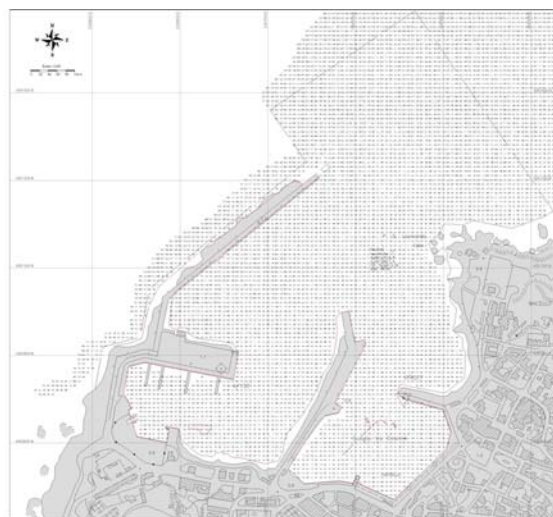
PROBE FOR MEASURING THE SPEED OF SOUND IN WATER



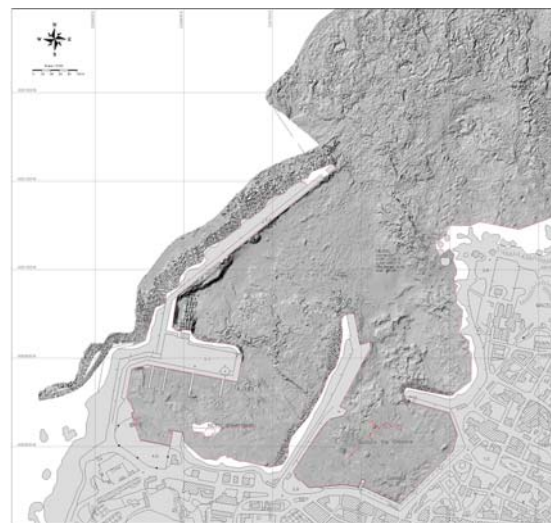
POSITION OF THE INSTRUMENTS ON BOARD



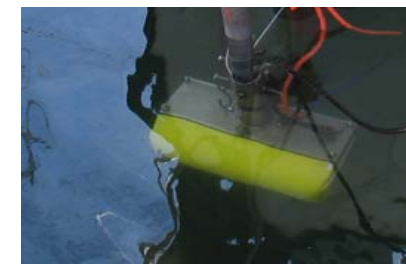
POSITIONING OF GPS RECEIVER ON DATUM POINT



BATHYMETRIC DEPTHS



BOTTOM MORPHOLOGY



MB EQUIPMENT